

Hamilton



Artist Impression

3 2 2

FLOORSPACE

Area based on external wall footprint

Living Area	115.0m ²
Alfresco + Porch	26.0m ²
Garage	38.0m ²
Total	179.0m ²

LUX LIVING

Spacious and perfect for entertaining, the Hamilton has it all. This home design exudes luxury with its floorplan created with the entertainer in mind.

Fall in love with this open-plan layout where the dining and living areas flow harmoniously through to a large alfresco area, with stacker doors allowing you to bring the out-side in. Enjoy preparing meals in the stylish kitchen complete with butler's pantry and island stone benchtop.

Enter the master bedroom and feel as though you are entering a sanctuary with its generous proportions, a walk-in robe and an ensuite.

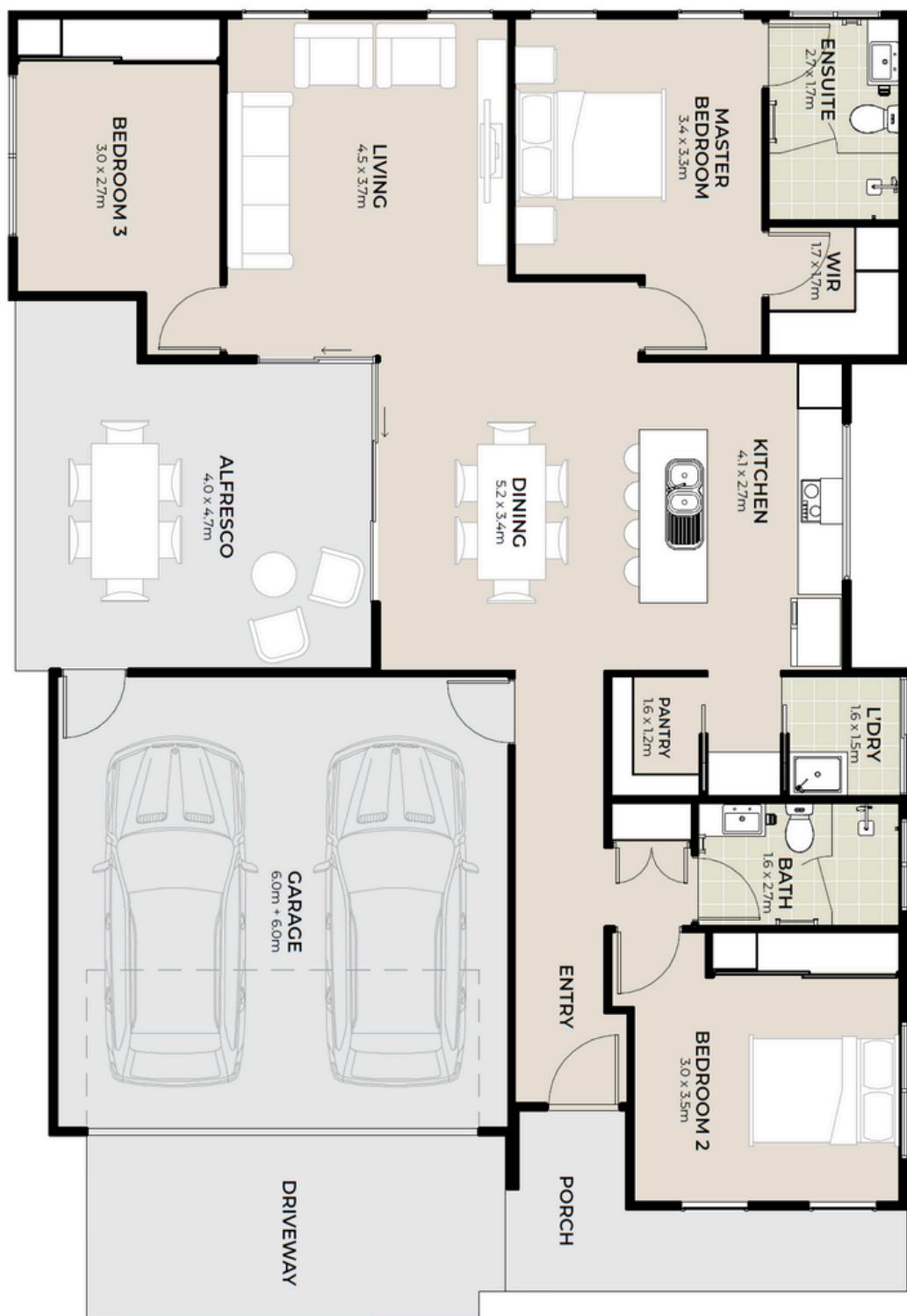
Thyme Lifestyle Resort Hervey Bay
5 Serenity Drive, Eli Waters, QLD 4655

herveybay.thyme.com.au
1300 585 882 | herveybay@thyme.com.au

THYME
LIFESTYLE RESORT

HERVEY BAY

Hamilton



Artist impression.
Not to scale and subject to change and approvals.